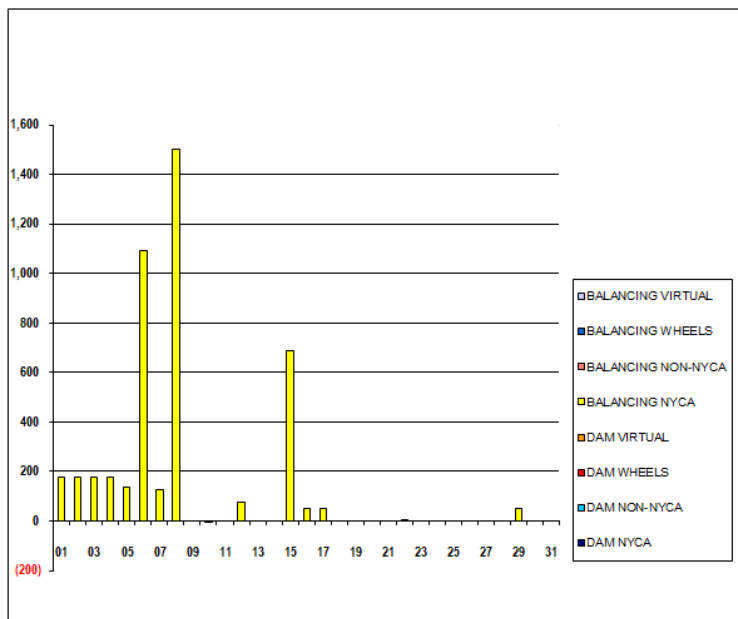


SETTLEMENTS REPORT
 March 2019 Settlement Adjustment
 April 5, 2019

Initial – Market Supply Delta Analysis

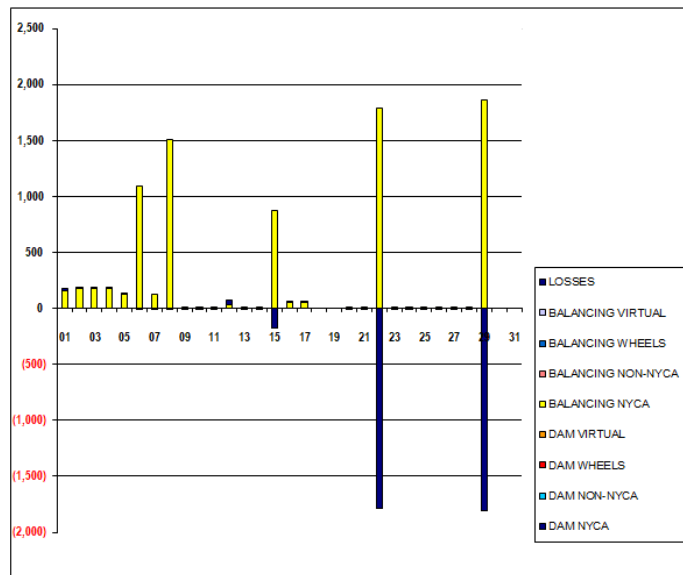
	MONDAY	TUESDAY	WEDNESDAY	THURSDAY	FRIDAY	SATURDAY	SUNDAY
					1	2	3
DAM NYCA					0	0	0
DAM NON-NYCA					0	0	0
DAM WHEELS					0	0	0
DAM VIRTUAL					0	0	0
BALANCING NYCA					176	178	178
BALANCING NON-NYCA					0	0	0
BALANCING WHEELS					0	0	0
BALANCING VIRTUAL					0	0	0
	4	5	6	7	8	9	10
DAM NYCA	0	0	0	0	0	0	0
DAM NON-NYCA	0	0	0	0	0	0	0
DAM WHEELS	0	0	0	0	0	0	0
DAM VIRTUAL	0	0	0	0	0	0	0
BALANCING NYCA	176	134	1,090	125	1,500	0	(0)
BALANCING NON-NYCA	0	0	0	0	0	0	0
BALANCING WHEELS	0	0	0	0	0	0	0
BALANCING VIRTUAL	0	0	0	0	0	0	0
	11	12	13	14	15	16	17
DAM NYCA	0	0	0	0	0	0	0
DAM NON-NYCA	0	0	0	0	0	0	0
DAM WHEELS	0	0	0	0	0	0	0
DAM VIRTUAL	0	0	0	0	0	0	0
BALANCING NYCA	0	76	0	0	688	51	50
BALANCING NON-NYCA	0	0	0	0	0	0	0
BALANCING WHEELS	0	0	0	0	0	0	0
BALANCING VIRTUAL	0	0	0	0	0	0	0
	18	19	20	21	22	23	24
DAM NYCA	0	0	0	0	0	0	0
DAM NON-NYCA	0	0	0	0	0	0	0
DAM WHEELS	0	0	0	0	0	0	0
DAM VIRTUAL	0	0	0	0	0	0	0
BALANCING NYCA	0	0	0	0	1	0	0
BALANCING NON-NYCA	0	0	0	0	0	0	0
BALANCING WHEELS	0	0	0	0	0	0	0
BALANCING VIRTUAL	0	0	0	0	0	0	0
	25	26	27	28	29	30	31
DAM NYCA	0	0	0	0	0	0	0
DAM NON-NYCA	0	0	0	0	0	0	0
DAM WHEELS	0	0	0	0	0	0	0
DAM VIRTUAL	0	0	0	0	0	0	0
BALANCING NYCA	0	0	0	0	50	0	0
BALANCING NON-NYCA	0	0	0	0	0	0	0
BALANCING WHEELS	0	0	0	0	0	0	0
BALANCING VIRTUAL	0	0	0	0	0	0	0



SETTLEMENTS REPORT
 March 2019 Settlement Adjustment
 April 5, 2019

Initial – Market Withdrawals Delta Analysis

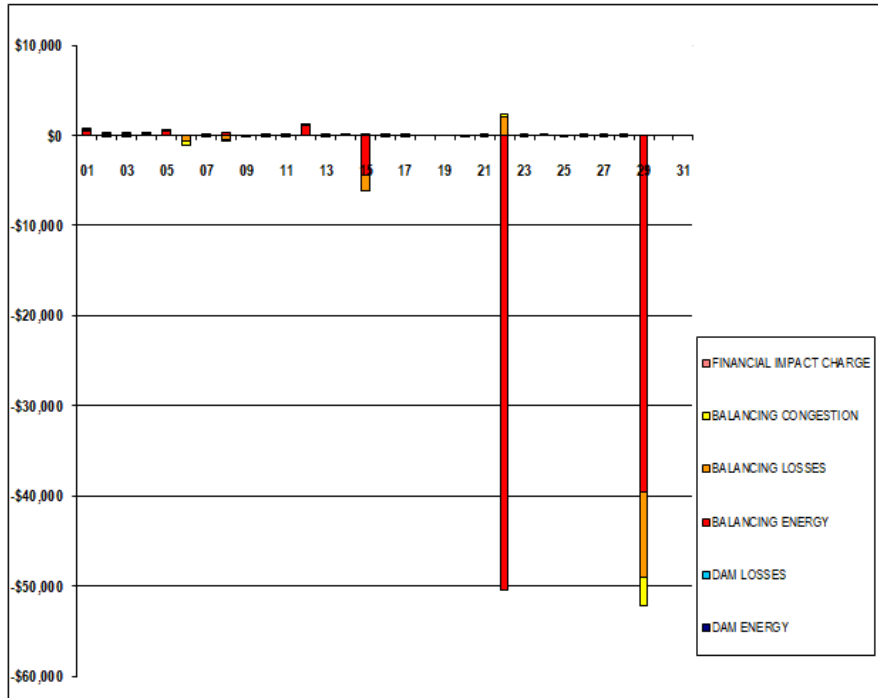
	MONDAY	TUESDAY	WEDNESDAY	THURSDAY	FRIDAY	SATURDAY	SUNDAY
					1	2	3
DAM NYCA					0	0	0
DAM NON-NYCA					0	0	0
DAM WHEELS					0	0	0
DAM VIRTUAL					0	0	0
BALANCING NYCA					160	178	178
BALANCING NON-NYCA					0	0	0
BALANCING WHEELS					0	0	0
BALANCING VIRTUAL					0	0	0
UFE/LOSSES					16	0	0
	4	5	6	7	8	9	10
DAM NYCA	0	0	0	0	0	0	0
DAM NON-NYCA	0	0	0	0	0	0	0
DAM WHEELS	0	0	0	0	0	0	0
DAM VIRTUAL	0	0	0	0	0	0	0
BALANCING NYCA	172	125	1,090	126	1,507	0	0
BALANCING NON-NYCA	0	0	0	0	0	0	0
BALANCING WHEELS	0	0	0	0	0	0	0
BALANCING VIRTUAL	0	0	0	0	0	0	0
UFE/LOSSES	4	9	(0)	(0)	(7)	(0)	(0)
	11	12	13	14	15	16	17
DAM NYCA	0	0	0	0	0	0	0
DAM NON-NYCA	0	0	0	0	0	0	0
DAM WHEELS	0	0	0	0	0	0	0
DAM VIRTUAL	0	0	0	0	0	0	0
BALANCING NYCA	(1)	32	1	0	869	51	50
BALANCING NON-NYCA	0	0	0	0	0	0	0
BALANCING WHEELS	0	0	0	0	0	0	0
BALANCING VIRTUAL	0	0	0	0	0	0	0
UFE/LOSSES	1	44	(1)	(0)	(181)	0	0
	18	19	20	21	22	23	24
DAM NYCA	0	0	0	0	0	0	0
DAM NON-NYCA	0	0	0	0	0	0	0
DAM WHEELS	0	0	0	0	0	0	0
DAM VIRTUAL	0	0	0	0	0	0	0
BALANCING NYCA	0	0	0	0	1,788	0	0
BALANCING NON-NYCA	0	0	0	0	0	0	0
BALANCING WHEELS	0	0	0	0	0	0	0
BALANCING VIRTUAL	0	0	0	0	0	0	0
UFE/LOSSES	0	0	(0)	(0)	(1,787)	(0)	(0)
	25	26	27	28	29	30	31
DAM NYCA	0	0	0	0	0	0	0
DAM NON-NYCA	0	0	0	0	0	0	0
DAM WHEELS	0	0	0	0	0	0	0
DAM VIRTUAL	0	0	0	0	0	0	0
BALANCING NYCA	0	0	0	0	1,861	0	0
BALANCING NON-NYCA	0	0	0	0	0	0	0
BALANCING WHEELS	0	0	0	0	0	0	0
BALANCING VIRTUAL	0	0	0	0	0	0	0
UFE/LOSSES	(0)	(0)	(0)	(0)	(1,811)	0	0



SETTLEMENTS REPORT
 March 2019 Settlement Adjustment
 April 5, 2019

Initial – Market Residuals Delta Analysis

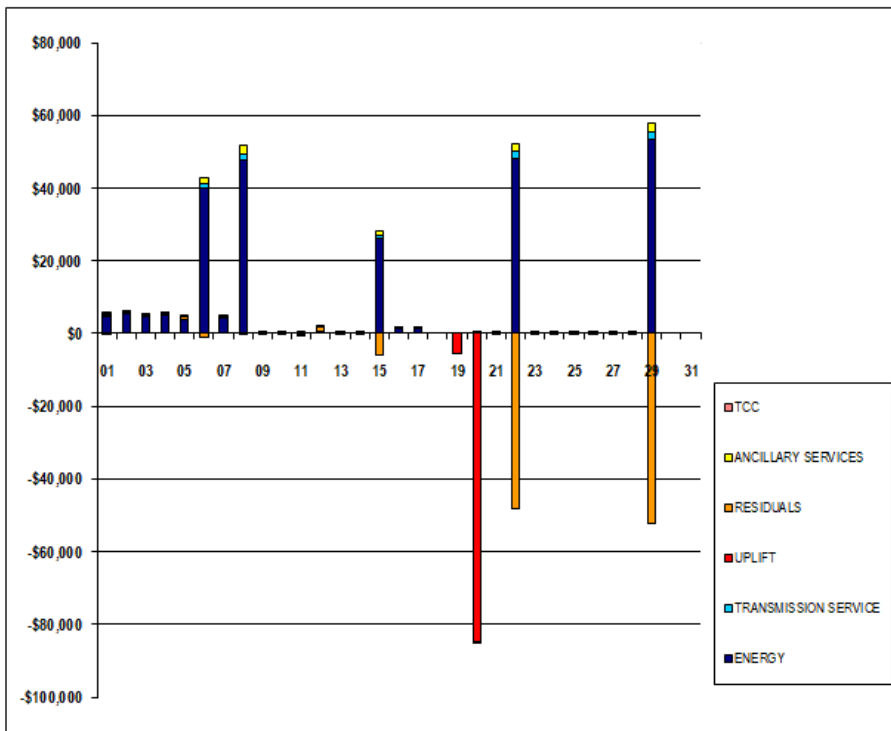
	MONDAY	TUESDAY	WEDNESDAY	THURSDAY	FRIDAY	SATURDAY	SUNDAY
					1	2	3
DAM ENERGY					\$0.01	\$0.00	(\$0.01)
DAM LOSSES					\$0.00	(\$0.01)	\$0.00
BALANCING ENERGY					\$446.98	\$0.25	\$11.76
BALANCING LOSSES					\$127.39	\$72.11	\$66.72
BALANCING CONGESTION					\$170.71	\$1.56	\$6.07
FINANCIAL IMPACT CHARGE					\$0.00	\$0.00	\$0.00
	4	5	6	7	8	9	10
DAM ENERGY	\$0.01	\$0.01	\$0.00	\$0.00	\$0.00	\$0.00	\$0.00
DAM LOSSES	\$0.00	\$0.01	(\$0.01)	\$0.00	\$0.00	\$0.00	(\$0.01)
BALANCING ENERGY	\$139.49	\$398.53	(\$1.52)	(\$2.87)	\$238.61	(\$1.24)	(\$46.52)
BALANCING LOSSES	\$76.05	\$63.69	(\$672.10)	\$51.61	(\$508.75)	\$0.00	\$2.70
BALANCING CONGESTION	\$25.12	\$18.18	(\$416.39)	\$94.41	(\$15.00)	(\$5.87)	\$6.42
FINANCIAL IMPACT CHARGE	\$0.00	\$0.00	\$0.00	\$0.00	\$0.00	\$0.00	\$0.00
	11	12	13	14	15	16	17
DAM ENERGY	\$0.00	\$0.00	\$0.00	\$0.00	(\$0.01)	\$0.00	(\$0.01)
DAM LOSSES	(\$0.01)	\$0.00	(\$0.01)	\$0.00	\$0.00	(\$0.01)	\$0.00
BALANCING ENERGY	\$41.34	\$1,026.54	(\$26.01)	\$1.47	(\$4,487.08)	\$0.14	(\$0.30)
BALANCING LOSSES	\$3.49	\$111.23	(\$2.12)	\$0.08	(\$1,615.41)	\$29.80	\$26.47
BALANCING CONGESTION	\$6.88	\$74.87	\$1.69	\$1.84	\$179.61	\$4.51	\$1.12
FINANCIAL IMPACT CHARGE	\$0.00	\$0.00	\$0.00	\$0.00	\$0.00	\$0.00	\$0.00
	18	19	20	21	22	23	24
DAM ENERGY	\$0.00	\$0.00	\$0.00	\$0.00	\$0.01	\$0.00	\$0.00
DAM LOSSES	\$0.00	\$0.00	\$0.01	\$0.00	\$0.01	\$0.00	\$0.00
BALANCING ENERGY	\$0.00	\$0.00	(\$2.19)	\$0.16	(\$50,498.38)	\$2.98	\$3.06
BALANCING LOSSES	\$0.00	\$0.00	(\$0.24)	\$0.12	\$2,045.89	(\$0.08)	\$0.00
BALANCING CONGESTION	\$0.00	\$0.00	(\$4.81)	(\$0.08)	\$247.72	(\$0.03)	\$0.77
FINANCIAL IMPACT CHARGE	\$0.00	\$0.00	\$0.00	\$0.00	\$0.00	\$0.00	\$0.00
	25	26	27	28	29	30	31
DAM ENERGY	(\$0.01)	\$0.00	\$0.00	\$0.01	\$0.00	\$0.00	\$0.00
DAM LOSSES	\$0.00	(\$0.01)	\$0.00	\$0.01	\$0.00	\$0.00	\$0.00
BALANCING ENERGY	(\$81.96)	\$2.43	\$0.35	\$0.23	(\$39,516.11)	\$0.00	\$0.00
BALANCING LOSSES	(\$1.31)	\$0.29	(\$0.18)	\$0.01	(\$9,524.29)	\$0.00	\$0.00
BALANCING CONGESTION	(\$57.58)	(\$3.86)	(\$0.22)	(\$0.53)	(\$3,140.84)	\$0.00	\$0.00
FINANCIAL IMPACT CHARGE	\$0.00	\$0.00	\$0.00	\$0.01	\$0.00	\$0.00	\$0.00



SETTLEMENTS REPORT
 March 2019 Settlement Adjustment
 April 5, 2019

Initial – Market Costs Delta Analysis

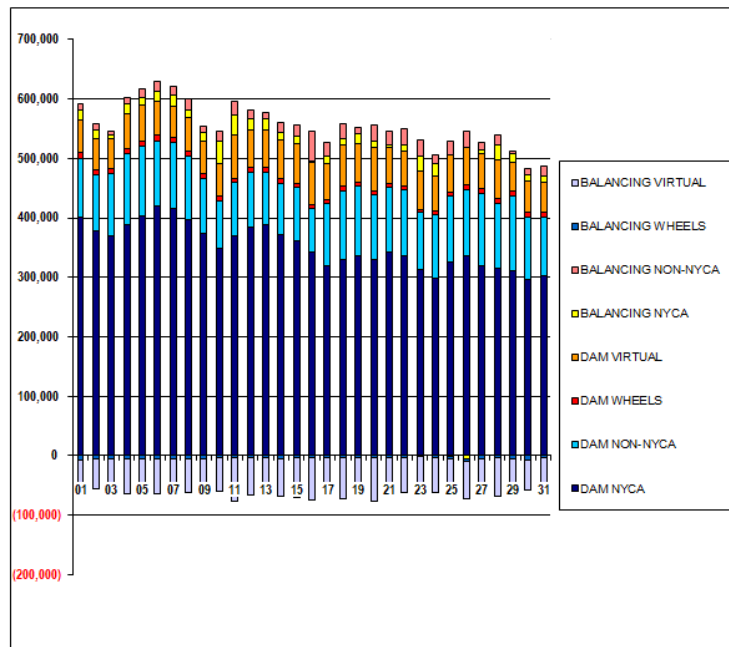
	MONDAY	TUESDAY	WEDNESDAY	THURSDAY	FRIDAY	SATURDAY	SUNDAY
ENERGY					1	2	3
TRANSMISSION SERVICE					\$4,729.90	\$5,603.59	\$4,730.79
UPLIFT					\$166.65	\$184.63	\$184.61
RESIDUALS					\$0.01	(\$0.01)	\$0.01
ANCILLARY SERVICES					\$745.09	\$73.91	\$84.54
TCC					\$240.46	\$261.14	\$261.17
					(\$20.00)	\$0.00	\$0.00
	4	5	6	7	8	9	10
ENERGY	\$5,192.40	\$3,874.48	\$40,040.82	\$4,163.65	\$47,877.29	\$7.05	\$33.25
TRANSMISSION SERVICE	\$179.11	\$130.01	\$1,133.83	\$131.50	\$1,567.55	\$0.07	\$0.22
UPLIFT	\$0.25	\$8.75	(\$0.02)	\$0.01	(\$4.02)	\$0.00	\$0.00
RESIDUALS	\$240.67	\$480.42	(\$1,090.02)	\$143.15	(\$285.14)	(\$7.11)	(\$37.41)
ANCILLARY SERVICES	\$253.98	\$186.57	\$1,503.82	\$186.00	\$2,214.85	\$0.07	\$0.21
TCC	\$0.00	\$0.00	\$0.00	\$0.00	\$0.00	\$0.00	\$0.00
	11	12	13	14	15	16	17
ENERGY	(\$51.85)	\$541.26	\$26.60	(\$3.31)	\$26,017.31	\$1,329.25	\$1,357.27
TRANSMISSION SERVICE	(\$0.93)	\$32.92	\$1.15	\$0.10	\$904.20	\$53.35	\$51.86
UPLIFT	\$0.00	\$0.00	\$0.00	\$0.00	\$7.78	\$0.01	\$0.01
RESIDUALS	\$51.70	\$1,212.64	(\$26.45)	\$3.39	(\$5,922.89)	\$34.44	\$27.28
ANCILLARY SERVICES	(\$1.04)	\$59.77	\$1.57	\$0.12	\$1,238.31	\$75.47	\$73.35
TCC	\$0.00	\$0.00	\$0.00	\$0.00	\$0.00	\$0.00	\$0.00
	18	19	20	21	22	23	24
ENERGY	\$0.00	\$0.00	\$7.37	(\$0.39)	\$48,235.47	(\$2.69)	(\$3.96)
TRANSMISSION SERVICE	\$0.00	\$0.00	\$0.06	\$0.07	\$1,859.30	\$0.07	\$0.07
UPLIFT	\$0.00	(\$5,371.65)	(\$84,872.02)	\$0.00	\$0.00	\$0.00	\$0.06
RESIDUALS	\$0.00	\$0.00	(\$7.23)	\$0.20	(\$48,204.75)	\$2.87	\$3.83
ANCILLARY SERVICES	\$0.00	\$0.00	\$0.07	\$0.07	\$2,094.06	\$0.08	\$0.09
TCC	\$0.00	\$0.00	\$0.00	\$0.00	\$0.00	\$0.00	\$0.00
	25	26	27	28	29	30	31
ENERGY	\$140.78	\$1.33	(\$0.07)	\$0.31	\$53,579.99	\$0.00	\$0.00
TRANSMISSION SERVICE	\$0.07	\$0.07	\$0.06	\$0.06	\$1,935.03	\$0.00	\$0.00
UPLIFT	\$0.01	\$0.00	\$0.00	\$0.01	\$0.00	\$0.00	\$0.00
RESIDUALS	(\$140.86)	(\$1.15)	(\$0.05)	(\$0.26)	(\$52,181.24)	\$0.00	\$0.00
ANCILLARY SERVICES	\$0.08	\$0.08	\$0.08	\$0.07	\$2,193.88	\$0.00	\$0.00
TCC	\$0.00	\$0.00	\$0.00	\$0.00	\$0.00	\$0.00	\$0.00



SETTLEMENTS REPORT
 March 2019 Settlement Adjustment
 April 5, 2019

Weekly Settlement – Market Supply Analysis

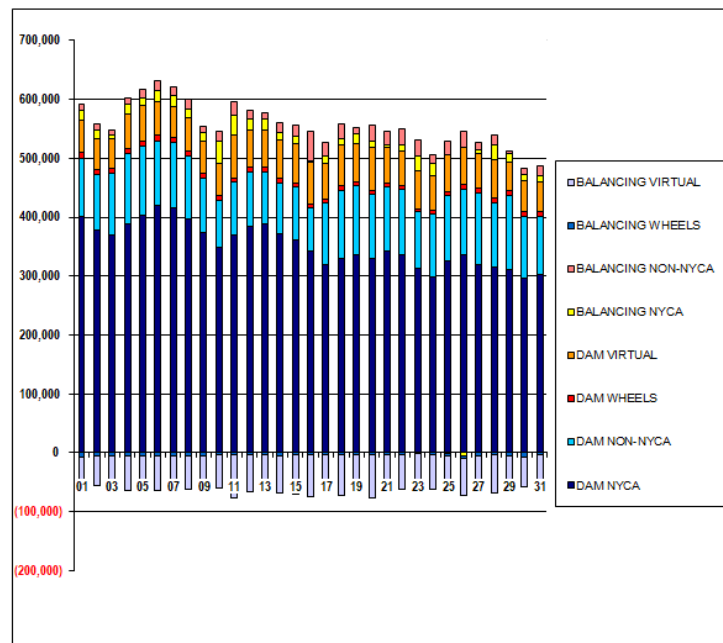
	MONDAY	TUESDAY	WEDNESDAY	THURSDAY	FRIDAY	SATURDAY	SUNDAY
DAM NYCA					1	2	3
DAM NON-NYCA					401,883	378,056	370,267
DAM WHEELS					98,817	94,984	104,430
DAM VIRTUAL					10,275	8,585	7,905
BALANCING NYCA					54,225	51,782	50,224
BALANCING NON-NYCA					16,453	14,424	5,696
BALANCING WHEELS					10,033	10,216	8,254
BALANCING VIRTUAL					(6,555)	(4,865)	(4,305)
					(54,225)	(51,782)	(50,224)
	4	5	6	7	8	9	10
DAM NYCA	387,697	403,552	419,770	415,840	396,371	373,417	349,368
DAM NON-NYCA	120,577	118,159	110,132	111,476	107,902	93,280	79,155
DAM WHEELS	7,996	8,305	8,760	8,782	8,632	8,386	7,431
DAM VIRTUAL	59,842	59,499	58,295	52,402	56,745	54,803	55,845
BALANCING NYCA	16,202	12,530	16,862	18,497	12,762	13,292	36,423
BALANCING NON-NYCA	9,637	14,941	17,085	14,844	17,446	10,554	18,390
BALANCING WHEELS	(4,396)	(4,705)	(5,160)	(5,182)	(5,048)	(4,786)	(4,058)
BALANCING VIRTUAL	(59,842)	(59,499)	(58,295)	(52,402)	(56,745)	(54,803)	(55,845)
	11	12	13	14	15	16	17
DAM NYCA	370,400	383,974	388,736	372,289	360,469	342,166	319,562
DAM NON-NYCA	68,976	93,561	88,816	85,955	90,470	73,330	104,877
DAM WHEELS	7,569	7,027	7,399	8,165	5,945	6,389	6,467
DAM VIRTUAL	72,071	63,658	62,645	64,528	68,179	72,481	59,617
BALANCING NYCA	33,616	18,696	18,637	12,171	12,081	539	13,444
BALANCING NON-NYCA	22,539	14,974	11,750	16,648	18,240	50,213	22,203
BALANCING WHEELS	(3,969)	(3,427)	(3,679)	(4,445)	(2,225)	(2,669)	(2,747)
BALANCING VIRTUAL	(72,071)	(63,658)	(62,645)	(64,528)	(68,179)	(72,481)	(59,617)
	18	19	20	21	22	23	24
DAM NYCA	329,478	336,597	329,123	341,901	335,656	312,852	297,719
DAM NON-NYCA	116,720	117,703	109,202	110,697	111,456	96,026	107,232
DAM WHEELS	7,633	6,455	6,917	5,800	6,010	5,412	6,749
DAM VIRTUAL	67,972	64,482	74,143	60,753	60,057	65,289	58,127
BALANCING NYCA	11,805	15,715	9,808	4,587	8,937	24,267	20,669
BALANCING NON-NYCA	23,801	11,410	27,872	21,201	27,460	27,483	15,993
BALANCING WHEELS	(3,913)	(2,735)	(3,197)	(2,200)	(2,410)	(1,812)	(3,149)
BALANCING VIRTUAL	(67,972)	(64,482)	(74,143)	(60,753)	(60,057)	(65,289)	(58,127)
	25	26	27	28	29	30	31
DAM NYCA	325,199	336,115	319,671	314,402	310,294	297,425	301,858
DAM NON-NYCA	111,576	111,674	121,639	110,674	125,417	103,007	100,074
DAM WHEELS	6,999	7,061	8,160	7,396	8,285	10,177	7,548
DAM VIRTUAL	62,408	63,453	58,231	64,948	48,235	50,508	49,489
BALANCING NYCA	(1,054)	(5,619)	6,337	25,078	14,311	11,810	10,807
BALANCING NON-NYCA	22,286	27,163	12,829	16,853	4,536	11,060	17,765
BALANCING WHEELS	(3,399)	(3,461)	(4,560)	(3,796)	(4,685)	(6,577)	(3,948)
BALANCING VIRTUAL	(62,408)	(63,453)	(58,231)	(64,948)	(48,235)	(50,508)	(49,489)



SETTLEMENTS REPORT
 March 2019 Settlement Adjustment
 April 5, 2019

Initial Settlement Adjustment – Market Supply Analysis

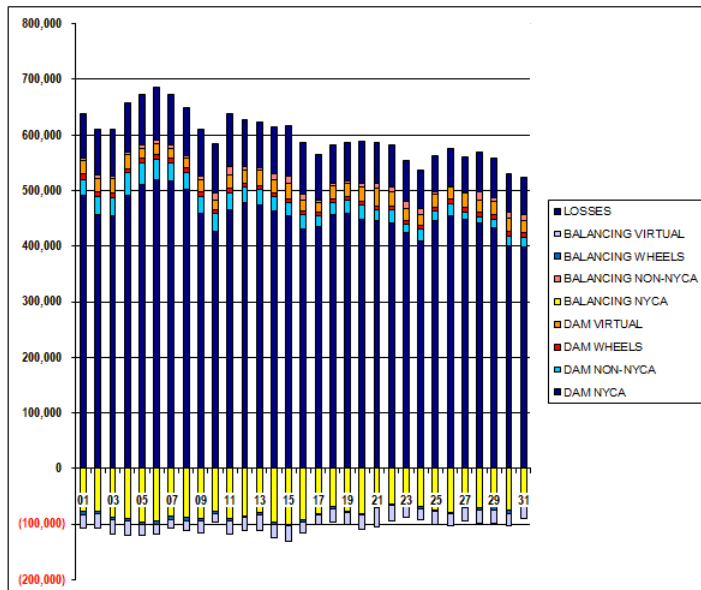
	MONDAY	TUESDAY	WEDNESDAY	THURSDAY	FRIDAY	SATURDAY	SUNDAY
DAM NYCA					1	2	3
DAM NON-NYCA					401,883	378,056	370,287
DAM WHEELS					98,817	94,984	104,430
DAM VIRTUAL					10,275	8,585	7,905
BALANCING NYCA					54,225	51,782	50,224
BALANCING NON-NYCA					16,628	14,602	5,874
BALANCING WHEELS					10,033	10,216	8,254
BALANCING VIRTUAL					(6,555)	(4,865)	(4,305)
					(54,225)	(51,782)	(50,224)
	4	5	6	7	8	9	10
DAM NYCA	387,697	403,552	419,770	415,840	396,371	373,417	349,368
DAM NON-NYCA	120,577	118,159	110,132	111,476	107,902	93,280	79,155
DAM WHEELS	7,996	8,305	8,760	8,782	8,632	8,386	7,431
DAM VIRTUAL	59,842	59,499	58,295	52,402	56,745	54,803	55,845
BALANCING NYCA	16,377	12,664	17,752	18,623	14,283	13,292	36,423
BALANCING NON-NYCA	9,637	14,941	17,085	14,844	17,446	10,554	18,390
BALANCING WHEELS	(4,396)	(4,705)	(5,160)	(5,182)	(5,048)	(4,786)	(4,056)
BALANCING VIRTUAL	(59,842)	(59,499)	(58,295)	(52,402)	(56,745)	(54,803)	(55,845)
	11	12	13	14	15	16	17
DAM NYCA	370,400	383,974	388,736	372,289	360,469	342,166	319,562
DAM NON-NYCA	88,976	93,561	88,816	85,955	90,470	73,330	104,877
DAM WHEELS	7,569	7,027	7,399	8,165	5,945	6,389	6,467
DAM VIRTUAL	72,071	63,658	62,645	64,528	68,179	72,481	59,617
BALANCING NYCA	33,616	18,971	18,637	12,171	12,769	691	13,494
BALANCING NON-NYCA	22,539	14,974	11,750	16,646	18,240	50,213	22,203
BALANCING WHEELS	(3,969)	(3,427)	(3,679)	(4,445)	(2,225)	(2,669)	(2,747)
BALANCING VIRTUAL	(72,071)	(63,658)	(62,645)	(64,528)	(68,179)	(72,481)	(59,617)
	18	19	20	21	22	23	24
DAM NYCA	329,478	336,597	329,123	341,901	335,656	312,852	297,719
DAM NON-NYCA	116,720	117,703	109,202	110,697	111,456	96,026	107,232
DAM WHEELS	7,633	6,455	6,917	5,800	6,010	5,412	6,749
DAM VIRTUAL	67,972	64,482	74,143	60,753	60,057	65,289	58,127
BALANCING NYCA	11,805	15,715	9,808	4,587	8,938	24,267	20,669
BALANCING NON-NYCA	23,801	11,410	27,872	21,201	27,460	27,483	15,993
BALANCING WHEELS	(3,913)	(2,735)	(3,197)	(2,200)	(2,410)	(1,812)	(3,149)
BALANCING VIRTUAL	(67,972)	(64,482)	(74,143)	(60,753)	(60,057)	(65,289)	(58,127)
	25	26	27	28	29	30	31
DAM NYCA	325,199	336,115	319,671	314,402	310,294	297,425	301,658
DAM NON-NYCA	111,576	111,674	121,639	110,874	126,417	103,007	100,074
DAM WHEELS	6,999	7,061	8,160	7,396	8,285	10,177	7,548
DAM VIRTUAL	62,408	63,453	58,231	64,948	48,235	50,508	49,489
BALANCING NYCA	(1,054)	(5,619)	6,337	25,078	14,361	11,810	10,807
BALANCING NON-NYCA	22,286	27,163	12,829	16,853	4,536	11,060	17,765
BALANCING WHEELS	(3,399)	(3,461)	(4,560)	(3,796)	(4,665)	(6,577)	(3,940)
BALANCING VIRTUAL	(62,408)	(63,453)	(58,231)	(64,948)	(48,235)	(50,508)	(49,489)



SETTLEMENTS REPORT
 March 2019 Settlement Adjustment
 April 5, 2019

Weekly Settlement – Market Withdrawals Analysis

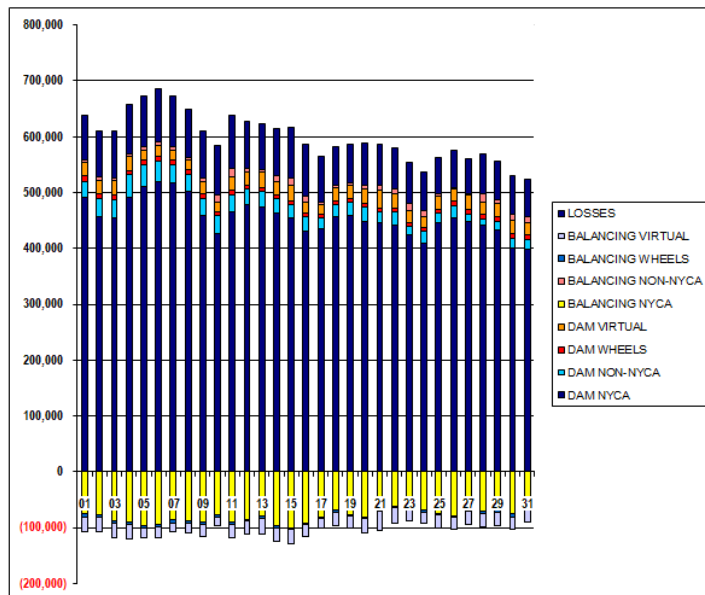
	MONDAY	TUESDAY	WEDNESDAY	THURSDAY	FRIDAY	SATURDAY	SUNDAY
					1	2	3
DAM NYCA					490,349	457,012	453,617
DAM NON-NYCA					26,708	31,353	34,420
DAM WHEELS					10,275	8,585	7,905
DAM VIRTUAL					25,348	25,842	26,218
BALANCING NYCA					(76,130)	(77,427)	(87,176)
BALANCING NON-NYCA					3,708	4,762	3,139
BALANCING WHEELS					(6,555)	(4,865)	(4,305)
BALANCING VIRTUAL					(25,348)	(25,642)	(26,218)
UFE/LOSSES					80,551	81,980	84,667
	4	5	6	7	8	9	10
DAM NYCA	491,715	511,056	520,076	517,489	501,424	458,915	427,428
DAM NON-NYCA	39,585	38,360	35,855	32,960	29,893	29,827	30,402
DAM WHEELS	7,996	8,305	8,760	8,782	8,632	8,386	7,431
DAM VIRTUAL	25,722	16,834	16,692	16,218	17,916	21,731	16,627
BALANCING NYCA	(90,274)	(85,784)	(84,928)	(86,500)	(88,513)	(89,895)	(76,625)
BALANCING NON-NYCA	3,326	4,772	7,796	6,407	5,501	6,312	12,927
BALANCING WHEELS	(4,396)	(4,705)	(5,160)	(5,182)	(5,048)	(4,786)	(4,056)
BALANCING VIRTUAL	(25,722)	(16,834)	(16,692)	(16,218)	(17,916)	(21,731)	(16,627)
UFE/LOSSES	89,760	90,779	94,849	90,300	86,197	85,384	89,203
	11	12	13	14	15	16	17
DAM NYCA	465,527	477,389	474,250	463,700	453,500	430,690	434,222
DAM NON-NYCA	31,046	28,570	27,611	24,406	25,326	25,419	20,144
DAM WHEELS	7,569	7,027	7,399	8,165	5,945	6,389	6,467
DAM VIRTUAL	23,425	23,955	27,962	23,581	27,204	19,735	16,580
BALANCING NYCA	(81,144)	(85,217)	(80,215)	(86,375)	(101,373)	(82,881)	(81,267)
BALANCING NON-NYCA	14,912	6,254	4,805	10,040	12,929	11,596	6,280
BALANCING WHEELS	(3,969)	(3,427)	(3,679)	(4,445)	(2,225)	(2,669)	(2,747)
BALANCING VIRTUAL	(23,425)	(23,955)	(27,962)	(23,581)	(27,204)	(19,735)	(16,580)
UFE/LOSSES	95,191	84,409	81,487	85,292	90,878	91,524	80,707
	18	19	20	21	22	23	24
DAM NYCA	455,922	458,067	447,738	445,855	442,350	423,549	410,029
DAM NON-NYCA	21,330	25,009	26,807	20,121	22,417	16,833	19,871
DAM WHEELS	7,633	6,455	6,917	5,800	6,010	5,412	6,749
DAM VIRTUAL	24,039	22,916	24,758	32,877	27,926	22,166	19,904
BALANCING NYCA	(68,274)	(76,278)	(80,554)	(69,355)	(64,620)	(64,773)	(69,153)
BALANCING NON-NYCA	3,943	3,990	6,526	8,850	7,489	12,288	10,421
BALANCING WHEELS	(3,913)	(2,735)	(3,197)	(2,200)	(2,410)	(1,812)	(3,149)
BALANCING VIRTUAL	(24,039)	(22,916)	(24,758)	(32,877)	(27,926)	(22,166)	(19,904)
UFE/LOSSES	68,883	70,637	75,488	72,915	75,881	72,731	70,445
	25	26	27	28	29	30	31
DAM NYCA	444,997	454,025	448,853	440,991	433,243	400,525	397,714
DAM NON-NYCA	18,223	22,684	13,218	12,012	14,687	16,675	16,656
DAM WHEELS	6,999	7,061	8,160	7,396	8,285	10,177	7,548
DAM VIRTUAL	23,194	21,685	24,900	23,127	23,966	21,781	22,430
BALANCING NYCA	(74,672)	(78,247)	(66,057)	(71,702)	(69,425)	(75,654)	(64,050)
BALANCING NON-NYCA	4,181	2,428	2,852	13,171	7,837	11,291	9,746
BALANCING WHEELS	(3,399)	(3,461)	(4,560)	(3,796)	(4,685)	(6,577)	(3,948)
BALANCING VIRTUAL	(23,194)	(21,685)	(24,900)	(23,127)	(23,966)	(21,781)	(22,430)
UFE/LOSSES	65,278	66,442	61,610	72,735	69,216	70,466	66,436



SETTLEMENTS REPORT
 March 2019 Settlement Adjustment
 April 5, 2019

Initial Settlement Adjustment – Market Withdrawals Analysis

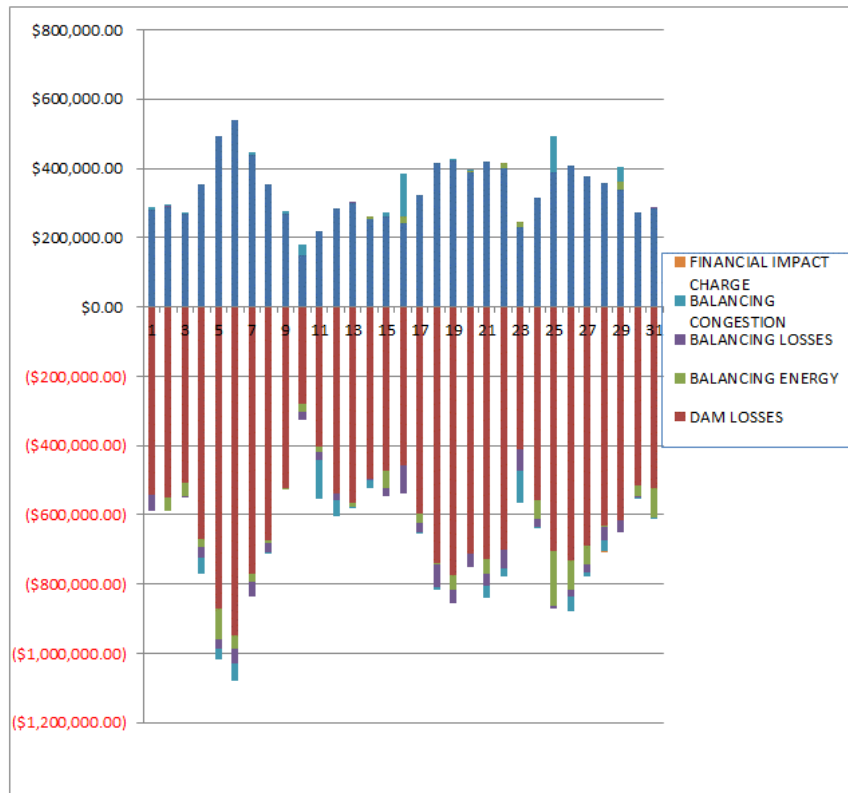
	MONDAY	TUESDAY	WEDNESDAY	THURSDAY	FRIDAY	SATURDAY	SUNDAY
					1	2	3
DAM NYCA					490,349	457,012	453,617
DAM NON-NYCA					26,708	31,353	34,420
DAM WHEELS					10,275	8,585	7,905
DAM VIRTUAL					25,348	25,642	26,218
BALANCING NYCA					(75,970)	(77,250)	(86,999)
BALANCING NON-NYCA					3,709	4,762	3,139
BALANCING WHEELS					(6,555)	(4,865)	(4,305)
BALANCING VIRTUAL					(25,348)	(25,642)	(26,218)
UFE/LOSSES					80,567	81,980	84,667
	4	5	6	7	8	9	10
DAM NYCA	491,715	511,056	520,076	517,489	501,424	458,915	427,428
DAM NON-NYCA	39,585	38,360	35,855	32,960	29,893	29,827	30,402
DAM WHEELS	7,596	8,305	8,760	8,782	8,632	8,386	7,431
DAM VIRTUAL	25,722	18,834	16,692	16,218	17,916	21,731	16,627
BALANCING NYCA	(90,101)	(95,659)	(93,838)	(86,373)	(87,006)	(89,895)	(76,625)
BALANCING NON-NYCA	3,326	4,772	7,796	6,407	5,501	6,312	12,927
BALANCING WHEELS	(4,398)	(4,705)	(5,160)	(5,182)	(5,048)	(4,788)	(4,056)
BALANCING VIRTUAL	(25,722)	(18,834)	(16,692)	(16,218)	(17,916)	(21,731)	(16,627)
UFE/LOSSES	89,763	90,788	94,849	90,300	86,190	85,384	89,203
	11	12	13	14	15	16	17
DAM NYCA	465,527	477,389	474,250	463,700	453,500	430,690	434,222
DAM NON-NYCA	31,046	28,570	27,611	24,406	25,326	25,419	20,144
DAM WHEELS	7,569	7,027	7,399	8,165	5,945	6,389	6,467
DAM VIRTUAL	23,425	23,955	27,362	23,581	27,204	19,735	16,580
BALANCING NYCA	(91,145)	(85,185)	(80,214)	(96,375)	(100,503)	(92,830)	(81,217)
BALANCING NON-NYCA	14,912	6,254	4,805	10,040	12,929	11,596	6,280
BALANCING WHEELS	(3,969)	(3,427)	(3,679)	(4,445)	(2,225)	(2,669)	(2,747)
BALANCING VIRTUAL	(23,425)	(23,955)	(27,362)	(23,581)	(27,204)	(19,735)	(16,580)
UFE/LOSSES	95,192	84,453	81,486	85,292	90,697	91,524	80,707
	18	19	20	21	22	23	24
DAM NYCA	455,922	458,067	447,738	445,855	442,350	423,549	410,029
DAM NON-NYCA	21,330	25,009	26,807	20,121	22,417	16,833	19,871
DAM WHEELS	7,633	6,455	6,917	5,800	6,010	5,412	6,749
DAM VIRTUAL	24,039	22,916	24,758	32,877	27,926	22,166	19,904
BALANCING NYCA	(68,274)	(76,278)	(80,554)	(69,355)	(62,840)	(64,772)	(69,153)
BALANCING NON-NYCA	3,943	3,990	6,526	8,850	7,489	12,288	10,421
BALANCING WHEELS	(3,913)	(2,735)	(3,197)	(2,200)	(2,410)	(1,812)	(3,149)
BALANCING VIRTUAL	(24,039)	(22,916)	(24,758)	(32,877)	(27,926)	(22,166)	(19,904)
UFE/LOSSES	68,883	70,637	75,488	72,915	74,094	72,730	70,445
	25	26	27	28	29	30	31
DAM NYCA	444,997	454,025	448,853	440,991	433,243	400,525	397,714
DAM NON-NYCA	18,223	22,684	13,218	12,012	14,687	16,675	18,656
DAM WHEELS	6,999	7,061	8,160	7,396	8,285	10,177	7,548
DAM VIRTUAL	23,194	21,685	24,900	23,127	23,966	21,781	22,430
BALANCING NYCA	(74,671)	(78,247)	(66,057)	(71,702)	(67,595)	(75,654)	(64,050)
BALANCING NON-NYCA	4,181	2,428	2,852	13,171	7,837	11,291	9,746
BALANCING WHEELS	(3,399)	(3,461)	(4,560)	(3,796)	(4,685)	(6,577)	(3,948)
BALANCING VIRTUAL	(23,194)	(21,685)	(24,900)	(23,127)	(23,966)	(21,781)	(22,430)
UFE/LOSSES	65,278	68,442	61,610	72,735	67,406	70,466	68,438



SETTLEMENTS REPORT
 March 2019 Settlement Adjustment
 April 5, 2019

Weekly Settlement – Market Residuals Analysis

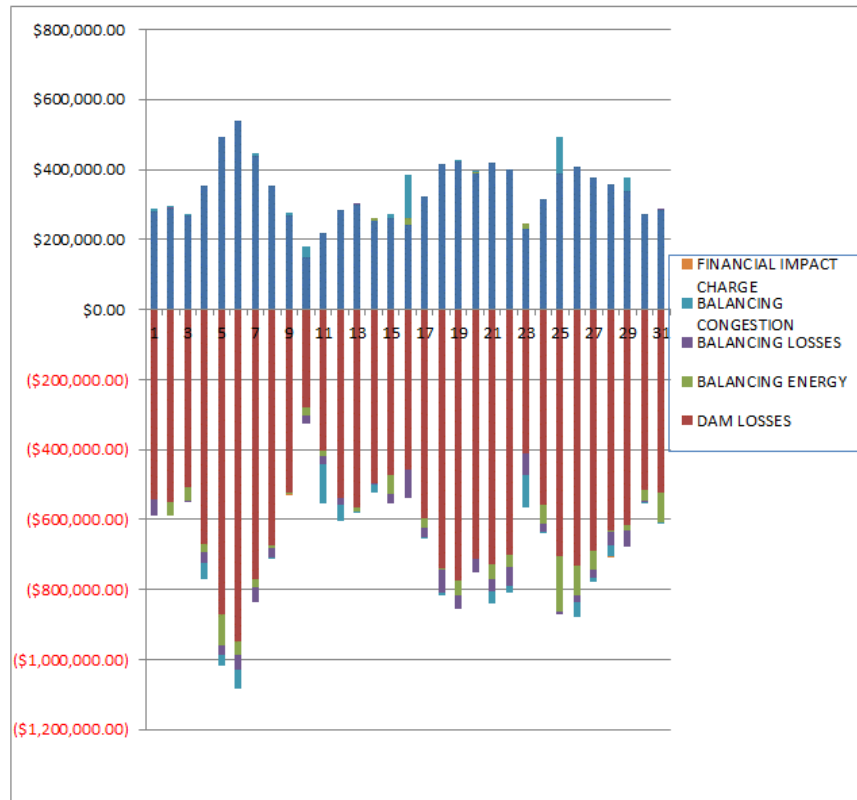
	MONDAY	TUESDAY	WEDNESDAY	THURSDAY	FRIDAY	SATURDAY	SUNDAY
					1	2	3
DAM ENERGY					\$279,677.72	\$290,022.76	\$269,750.89
DAM LOSSES					(\$541,639.05)	(\$549,773.83)	(\$506,770.50)
BALANCING ENERGY					(\$1,067.15)	(\$40,010.21)	(\$39,624.50)
BALANCING LOSSES					(\$47,278.71)	\$2,515.99	(\$4,286.55)
BALANCING CONGESTION					\$7,254.27	\$4,353.50	\$3,111.06
FINANCIAL IMPACT CHARGE					\$0.00	\$0.00	\$0.00
	4	5	6	7	8	9	10
DAM ENERGY	\$355,038.95	\$491,499.41	\$538,307.37	\$437,214.05	\$352,185.29	\$267,910.64	\$151,116.50
DAM LOSSES	(\$670,726.04)	(\$870,631.47)	(\$948,869.82)	(\$771,986.04)	(\$672,239.67)	(\$521,678.53)	(\$280,139.85)
BALANCING ENERGY	(\$21,083.95)	(\$89,060.65)	(\$36,454.69)	(\$20,841.43)	(\$9,940.61)	(\$6,913.44)	(\$20,930.85)
BALANCING LOSSES	(\$33,350.36)	(\$27,615.18)	(\$42,739.64)	(\$43,975.03)	(\$24,341.02)	\$2,271.57	(\$25,491.76)
BALANCING CONGESTION	(\$45,938.32)	(\$30,262.97)	(\$52,671.49)	\$10,584.38	(\$64.97)	\$5,600.03	\$27,790.15
FINANCIAL IMPACT CHARGE	\$0.00	\$0.00	\$0.00	\$0.00	\$0.00	(\$0.04)	\$0.00
	11	12	13	14	15	16	17
DAM ENERGY	\$217,539.25	\$284,517.22	\$298,455.20	\$254,147.99	\$262,635.66	\$242,983.98	\$323,507.18
DAM LOSSES	(\$404,760.72)	(\$537,681.57)	(\$565,669.50)	(\$494,702.91)	(\$473,445.41)	(\$457,339.94)	(\$596,802.14)
BALANCING ENERGY	(\$13,074.55)	(\$2,067.78)	(\$12,649.15)	\$5,480.16	(\$47,810.43)	\$16,393.51	(\$25,467.04)
BALANCING LOSSES	(\$23,959.78)	(\$18,200.95)	\$831.03	(\$5,276.60)	(\$25,189.94)	(\$80,774.89)	(\$28,517.39)
BALANCING CONGESTION	(\$113,498.32)	(\$45,442.50)	(\$2,320.15)	(\$24,152.62)	\$10,764.73	\$125,866.44	(\$2,045.76)
FINANCIAL IMPACT CHARGE	\$0.00	\$0.00	\$0.00	\$0.00	\$0.00	\$0.00	\$0.00
	18	19	20	21	22	23	24
DAM ENERGY	\$414,871.27	\$422,418.82	\$390,171.23	\$420,950.74	\$401,830.86	\$229,928.10	\$315,294.29
DAM LOSSES	(\$740,339.73)	(\$772,131.04)	(\$712,236.90)	(\$729,290.58)	(\$702,031.35)	(\$412,217.41)	(\$558,007.90)
BALANCING ENERGY	(\$4,523.81)	(\$43,796.24)	\$1,568.90	(\$39,492.89)	\$15,523.74	\$16,939.65	(\$54,684.24)
BALANCING LOSSES	(\$62,396.53)	(\$38,853.10)	(\$38,848.98)	(\$35,511.25)	(\$53,884.56)	(\$60,917.93)	(\$23,499.79)
BALANCING CONGESTION	(\$7,731.73)	\$1,227.09	\$5,040.18	(\$33,801.24)	(\$20,851.76)	(\$81,221.27)	(\$2,206.24)
FINANCIAL IMPACT CHARGE	\$0.00	\$0.00	\$0.00	\$0.00	\$0.00	\$0.00	\$0.00
	25	26	27	28	29	30	31
DAM ENERGY	\$388,020.49	\$408,375.96	\$375,478.73	\$357,136.03	\$339,310.69	\$273,820.70	\$285,783.18
DAM LOSSES	(\$704,469.57)	(\$731,352.77)	(\$689,662.74)	(\$632,149.98)	(\$614,206.88)	(\$513,795.62)	(\$521,625.22)
BALANCING ENERGY	(\$159,144.67)	(\$83,850.23)	(\$53,639.53)	(\$1,299.69)	\$20,975.51	(\$32,508.31)	(\$86,985.74)
BALANCING LOSSES	(\$8,581.75)	(\$19,464.19)	(\$22,113.53)	(\$39,862.27)	(\$34,967.86)	(\$4,581.14)	\$3,709.80
BALANCING CONGESTION	\$104,971.30	(\$45,316.80)	(\$13,602.11)	(\$30,942.06)	\$42,102.08	(\$655.08)	(\$1,452.40)
FINANCIAL IMPACT CHARGE	\$0.00	\$0.00	\$0.00	(\$1,042.61)	\$0.00	\$0.00	\$0.00



SETTLEMENTS REPORT
 March 2019 Settlement Adjustment
 April 5, 2019

Initial Settlement Adjustment – Market Residuals Analysis

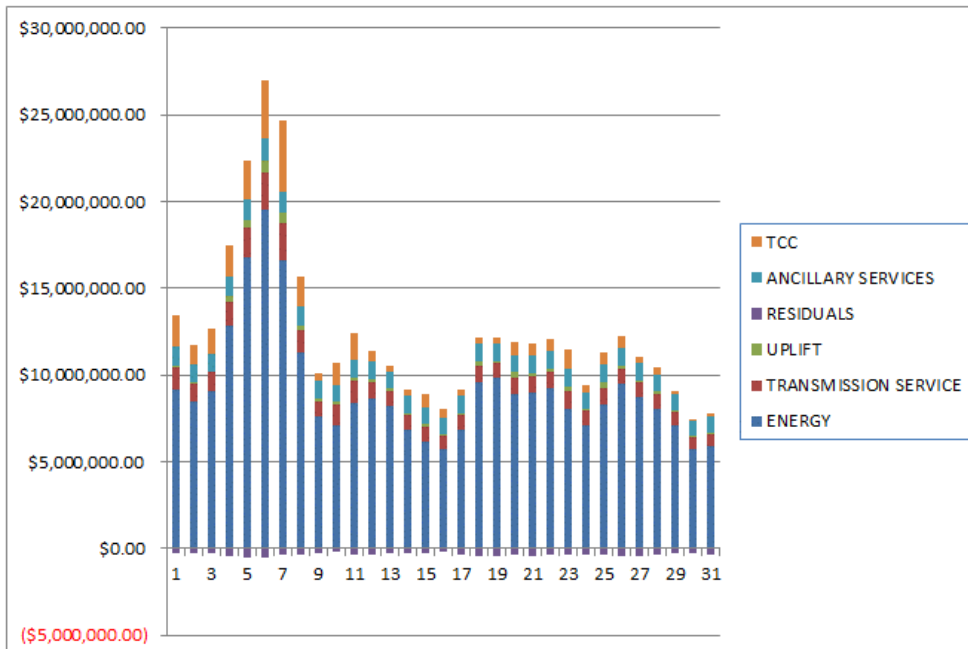
	MONDAY	TUESDAY	WEDNESDAY	THURSDAY	FRIDAY	SATURDAY	SUNDAY
					1	2	3
DAM ENERGY					\$279,677.73	\$290,022.76	\$269,750.88
DAM LOSSES					(\$541,639.05)	(\$549,773.84)	(\$506,770.50)
BALANCING ENERGY					(\$620.17)	(\$40,009.96)	(\$39,612.74)
BALANCING LOSSES					(\$47,151.32)	\$2,588.10	(\$4,219.83)
BALANCING CONGESTION					\$7,424.98	\$4,355.06	\$3,117.13
FINANCIAL IMPACT CHARGE					\$0.00	\$0.00	\$0.00
	4	5	6	7	8	9	10
DAM ENERGY	\$355,038.96	\$491,499.42	\$538,307.37	\$437,214.05	\$352,185.29	\$267,910.64	\$151,116.50
DAM LOSSES	(\$670,726.04)	(\$870,631.46)	(\$948,869.83)	(\$771,986.04)	(\$672,239.67)	(\$521,678.53)	(\$280,139.86)
BALANCING ENERGY	(\$20,944.46)	(\$88,662.12)	(\$36,456.21)	(\$20,844.30)	(\$9,702.00)	(\$6,914.68)	(\$20,977.37)
BALANCING LOSSES	(\$33,274.31)	(\$27,551.49)	(\$43,411.74)	(\$43,923.42)	(\$24,849.77)	\$2,271.57	(\$25,489.06)
BALANCING CONGESTION	(\$45,913.20)	(\$30,244.79)	(\$53,087.88)	\$10,678.79	(\$79.97)	\$5,594.16	\$27,796.57
FINANCIAL IMPACT CHARGE	\$0.00	\$0.00	\$0.00	\$0.00	\$0.00	(\$0.04)	\$0.00
	11	12	13	14	15	16	17
DAM ENERGY	\$217,539.25	\$284,517.22	\$298,455.20	\$254,147.99	\$262,635.65	\$242,983.98	\$323,507.17
DAM LOSSES	(\$404,760.73)	(\$537,681.57)	(\$565,669.51)	(\$494,702.91)	(\$473,445.41)	(\$457,339.95)	(\$596,802.14)
BALANCING ENERGY	(\$13,033.21)	(\$1,041.24)	(\$12,675.16)	\$5,481.63	(\$52,297.51)	\$16,393.65	(\$25,467.34)
BALANCING LOSSES	(\$23,956.29)	(\$18,089.72)	\$828.91	(\$5,276.52)	(\$26,805.35)	(\$80,745.09)	(\$28,490.92)
BALANCING CONGESTION	(\$113,492.44)	(\$45,367.63)	(\$2,318.46)	(\$24,150.78)	\$10,944.34	\$125,870.95	(\$2,044.64)
FINANCIAL IMPACT CHARGE	\$0.00	\$0.00	\$0.00	\$0.00	\$0.00	\$0.00	\$0.00
	18	19	20	21	22	23	24
DAM ENERGY	\$414,871.27	\$422,418.82	\$390,171.23	\$420,950.74	\$401,830.87	\$229,928.10	\$315,294.29
DAM LOSSES	(\$740,339.73)	(\$772,131.04)	(\$712,236.89)	(\$729,290.58)	(\$702,031.34)	(\$412,217.41)	(\$558,007.90)
BALANCING ENERGY	(\$4,523.81)	(\$43,766.24)	\$1,566.71	(\$39,492.73)	(\$34,974.64)	\$16,942.63	(\$54,681.18)
BALANCING LOSSES	(\$62,396.53)	(\$38,853.10)	(\$38,849.22)	(\$35,511.13)	(\$51,838.67)	(\$60,918.01)	(\$23,499.79)
BALANCING CONGESTION	(\$7,731.73)	\$1,227.09	\$5,035.37	(\$33,801.32)	(\$20,604.04)	(\$91,221.30)	(\$2,205.47)
FINANCIAL IMPACT CHARGE	\$0.00	\$0.00	\$0.00	\$0.00	\$0.00	\$0.00	\$0.00
	25	26	27	28	29	30	31
DAM ENERGY	\$388,020.48	\$408,375.96	\$375,478.73	\$357,136.04	\$339,310.69	\$273,820.70	\$285,783.18
DAM LOSSES	(\$704,469.57)	(\$731,352.78)	(\$689,662.74)	(\$632,149.97)	(\$614,206.88)	(\$513,795.62)	(\$521,625.22)
BALANCING ENERGY	(\$159,226.63)	(\$83,847.80)	(\$53,639.18)	(\$1,299.46)	(\$18,540.60)	(\$32,508.31)	(\$86,985.74)
BALANCING LOSSES	(\$8,583.06)	(\$19,463.90)	(\$22,113.71)	(\$39,862.26)	(\$44,492.15)	(\$4,581.14)	\$3,709.80
BALANCING CONGESTION	\$104,913.72	(\$45,320.66)	(\$13,602.33)	(\$30,942.59)	\$38,961.24	(\$655.08)	(\$1,452.40)
FINANCIAL IMPACT CHARGE	\$0.00	\$0.00	\$0.00	(\$1,042.60)	\$0.00	\$0.00	\$0.00



SETTLEMENTS REPORT
 March 2019 Settlement Adjustment
 April 5, 2019

Weekly Settlement – Market Costs Analysis

	MONDAY	TUESDAY	WEDNESDAY	THURSDAY	FRIDAY	SATURDAY	SUNDAY
ENERGY					1	2	3
TRANSMISSION SERVICE					\$9,141,770.69	\$8,503,954.04	\$9,039,481.91
UPLIFT					\$1,310,631.18	\$1,029,594.86	\$1,127,000.14
RESIDUALS					\$96,647.23	\$52,559.11	\$57,686.09
ANCILLARY SERVICES					(\$303,052.92)	(\$292,891.79)	(\$277,819.60)
TCC					\$1,063,078.51	\$1,002,580.08	\$1,018,894.67
					\$1,807,303.97	\$1,131,009.51	\$1,392,392.19
	4	5	6	7	8	9	10
ENERGY	\$12,851,790.11	\$16,812,555.36	\$19,537,848.25	\$16,590,540.00	\$11,258,001.56	\$7,598,629.78	\$7,064,176.86
TRANSMISSION SERVICE	\$1,358,545.78	\$1,644,221.42	\$2,153,933.76	\$2,188,627.23	\$1,328,625.39	\$888,135.95	\$1,202,499.70
UPLIFT	\$366,723.33	\$471,470.14	\$702,814.99	\$545,053.35	\$298,930.46	\$170,875.98	\$171,880.67
RESIDUALS	(\$416,059.72)	(\$526,070.86)	(\$542,428.27)	(\$389,004.07)	(\$354,400.98)	(\$252,809.77)	(\$147,655.81)
ANCILLARY SERVICES	\$1,123,795.65	\$1,191,491.68	\$1,229,332.70	\$1,231,379.30	\$1,087,071.62	\$980,437.12	\$964,784.75
TCC	\$1,777,945.48	\$2,224,813.19	\$3,342,644.82	\$4,083,780.37	\$1,663,555.74	\$420,084.62	\$1,337,904.65
	11	12	13	14	15	16	17
ENERGY	\$8,399,987.49	\$8,621,971.80	\$8,250,655.59	\$6,846,220.08	\$6,127,395.25	\$5,726,722.89	\$6,875,330.89
TRANSMISSION SERVICE	\$1,289,246.73	\$963,234.50	\$817,993.87	\$843,009.93	\$917,101.18	\$795,658.25	\$858,167.55
UPLIFT	\$157,851.06	\$176,768.38	\$149,829.21	\$131,905.66	\$156,312.43	\$65,369.94	\$74,305.60
RESIDUALS	(\$337,755.12)	(\$318,875.58)	(\$281,352.57)	(\$264,503.98)	(\$273,045.39)	(\$152,870.90)	(\$329,325.15)
ANCILLARY SERVICES	\$1,035,728.93	\$1,012,556.40	\$993,791.44	\$963,739.04	\$957,583.85	\$972,636.02	\$971,797.66
TCC	\$1,489,348.79	\$619,076.46	\$291,145.95	\$337,033.81	\$767,921.14	\$491,980.46	\$353,410.56
	18	19	20	21	22	23	24
ENERGY	\$9,592,284.84	\$9,822,471.30	\$8,943,349.30	\$9,022,410.42	\$9,221,593.15	\$8,023,917.97	\$7,104,770.04
TRANSMISSION SERVICE	\$903,880.52	\$847,738.40	\$902,023.59	\$900,444.69	\$946,609.24	\$1,031,509.40	\$815,970.11
UPLIFT	\$294,202.22	\$93,940.35	\$323,480.68	\$199,872.94	\$204,880.82	\$313,763.33	\$142,983.40
RESIDUALS	(\$400,120.53)	(\$431,104.47)	(\$354,305.57)	(\$417,145.22)	(\$359,413.07)	(\$317,488.86)	(\$323,103.88)
ANCILLARY SERVICES	\$1,040,482.77	\$1,047,541.07	\$990,243.46	\$978,161.70	\$976,437.90	\$968,527.38	\$949,076.82
TCC	\$297,378.60	\$318,651.81	\$714,995.03	\$732,478.62	\$703,289.02	\$1,146,011.86	\$371,917.32
	25	26	27	28	29	30	31
ENERGY	\$8,320,402.20	\$9,459,519.22	\$8,742,275.95	\$8,083,033.24	\$7,129,579.78	\$5,758,841.20	\$5,923,782.29
TRANSMISSION SERVICE	\$904,258.74	\$914,301.43	\$836,393.94	\$855,673.83	\$725,069.01	\$651,216.44	\$672,270.93
UPLIFT	\$360,050.63	\$125,190.81	\$120,052.09	\$101,422.66	\$108,289.38	\$59,803.16	\$74,443.97
RESIDUALS	(\$379,204.20)	(\$471,608.03)	(\$403,539.18)	(\$348,160.58)	(\$246,786.46)	(\$277,719.45)	(\$320,570.38)
ANCILLARY SERVICES	\$994,005.09	\$1,047,965.56	\$1,001,360.14	\$964,284.46	\$963,415.03	\$899,178.96	\$932,278.84
TCC	\$726,205.58	\$689,643.38	\$323,078.70	\$448,063.10	\$126,562.80	\$82,579.92	\$157,853.49



SETTLEMENTS REPORT
 March 2019 Settlement Adjustment
 April 5, 2019

Initial Settlement Adjustment – Market Costs Analysis

	MONDAY	TUESDAY	WEDNESDAY	THURSDAY	FRIDAY	SATURDAY	SUNDAY
ENERGY					1	2	3
TRANSMISSION SERVICE					\$9,146,500.59	\$8,509,557.63	\$9,044,212.70
UPLIFT					\$1,310,797.83	\$1,029,779.49	\$1,127,184.75
RESIDUALS					\$96,647.24	\$52,559.10	\$57,686.10
ANCILLARY SERVICES					(\$302,307.83)	(\$292,817.88)	(\$277,735.06)
TCC					\$1,063,318.97	\$1,002,841.22	\$1,019,155.84
					\$1,807,283.97	\$1,131,009.51	\$1,392,392.19
	4	5	6	7	8	9	10
ENERGY	\$12,856,982.51	\$16,816,429.84	\$19,577,889.07	\$16,594,703.65	\$11,305,878.85	\$7,598,636.83	\$7,064,210.11
TRANSMISSION SERVICE	\$1,358,724.89	\$1,644,351.43	\$2,155,067.59	\$2,188,758.73	\$1,330,192.94	\$888,136.02	\$1,202,499.92
UPLIFT	\$366,723.58	\$471,478.89	\$702,814.97	\$545,053.36	\$298,926.44	\$170,875.98	\$171,880.67
RESIDUALS	(\$415,819.05)	(\$525,590.44)	(\$543,518.29)	(\$388,860.92)	(\$354,888.12)	(\$252,816.88)	(\$147,693.22)
ANCILLARY SERVICES	\$1,124,049.63	\$1,191,678.25	\$1,230,836.52	\$1,231,565.30	\$1,089,286.47	\$980,437.19	\$964,784.96
TCC	\$1,777,945.48	\$2,224,813.19	\$3,342,644.82	\$4,083,780.37	\$1,663,555.74	\$420,084.62	\$1,337,904.65
	11	12	13	14	15	16	17
ENERGY	\$8,399,935.64	\$8,622,513.06	\$8,250,682.19	\$6,846,216.77	\$6,153,412.56	\$5,728,052.14	\$6,876,688.16
TRANSMISSION SERVICE	\$1,289,245.80	\$963,267.42	\$817,995.02	\$843,010.03	\$918,005.38	\$795,711.60	\$858,219.41
UPLIFT	\$157,851.06	\$176,768.38	\$149,829.21	\$131,905.66	\$156,320.21	\$65,369.95	\$74,305.61
RESIDUALS	(\$337,703.42)	(\$317,662.94)	(\$281,379.02)	(\$264,500.59)	(\$278,968.28)	(\$152,836.46)	(\$329,297.87)
ANCILLARY SERVICES	\$1,035,727.89	\$1,012,616.17	\$993,793.01	\$963,739.16	\$958,822.16	\$972,711.49	\$971,871.01
TCC	\$1,489,348.79	\$619,076.46	\$291,145.95	\$337,033.81	\$767,921.14	\$491,980.46	\$353,410.56
	18	19	20	21	22	23	24
ENERGY	\$9,592,284.84	\$9,822,471.30	\$8,943,356.67	\$9,022,410.03	\$9,269,828.62	\$8,023,915.28	\$7,104,766.08
TRANSMISSION SERVICE	\$903,880.52	\$847,738.40	\$902,023.65	\$900,444.76	\$948,468.54	\$1,031,509.47	\$815,970.18
UPLIFT	\$294,202.22	\$88,568.70	\$238,608.66	\$199,872.94	\$204,880.82	\$313,763.33	\$142,983.46
RESIDUALS	(\$400,120.53)	(\$431,104.47)	(\$354,312.80)	(\$417,145.02)	(\$407,617.82)	(\$317,485.99)	(\$323,100.05)
ANCILLARY SERVICES	\$1,040,482.77	\$1,047,541.07	\$990,243.53	\$978,161.77	\$978,531.96	\$968,527.46	\$949,076.91
TCC	\$297,378.60	\$318,651.81	\$714,995.03	\$732,478.62	\$703,289.02	\$1,146,011.86	\$371,917.32
	25	26	27	28	29	30	31
ENERGY	\$8,320,542.98	\$9,459,520.55	\$8,742,275.88	\$8,083,033.55	\$7,183,159.77	\$5,758,841.20	\$5,923,782.29
TRANSMISSION SERVICE	\$904,258.81	\$914,301.50	\$836,394.00	\$855,673.89	\$727,004.04	\$651,216.44	\$672,270.93
UPLIFT	\$360,050.64	\$125,190.81	\$120,052.09	\$101,422.67	\$108,289.38	\$59,803.16	\$74,443.97
RESIDUALS	(\$379,345.06)	(\$471,609.18)	(\$403,539.23)	(\$348,160.84)	(\$298,967.70)	(\$277,719.45)	(\$320,570.38)
ANCILLARY SERVICES	\$994,005.17	\$1,047,965.64	\$1,001,360.22	\$964,284.53	\$965,608.91	\$899,178.96	\$932,278.84
TCC	\$726,205.58	\$689,643.38	\$323,078.70	\$448,063.10	\$126,562.80	\$82,579.92	\$157,853.49

